

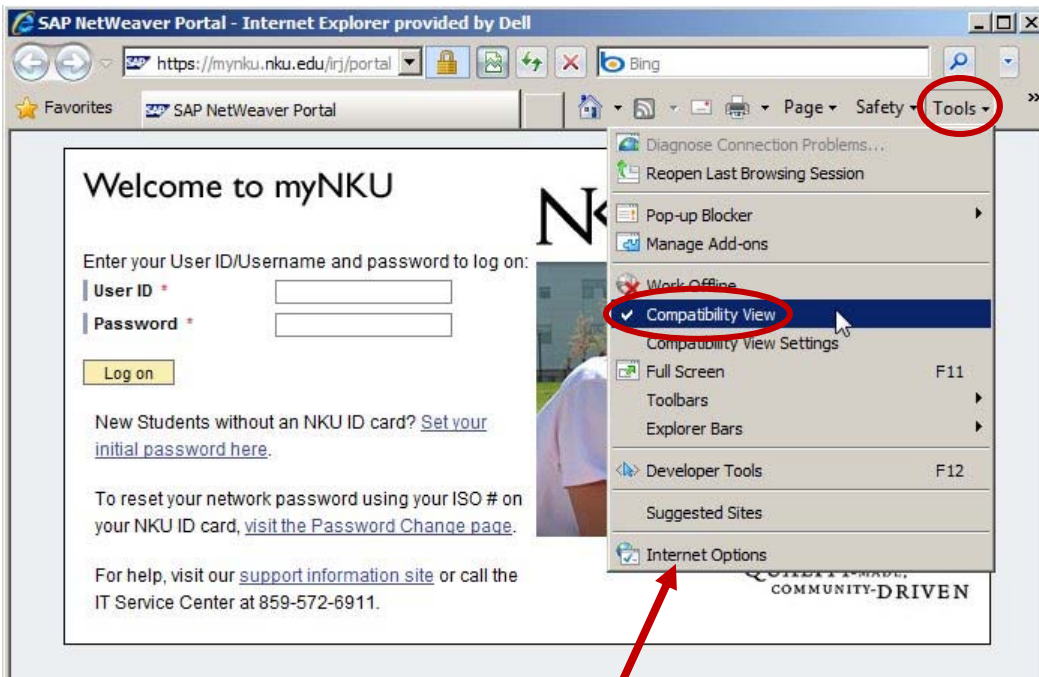


## Internet Explorer 8 Settings for myNKU/SAP

The Office of Information Technology has upgraded our Internet Explorer browser to the latest version, Internet Explorer 8. This upgrade will help protect your computer and NKU's network given the increased security features.

Please take a moment to customize a few settings to ensure myNKU will work smoothly with this new browser version.

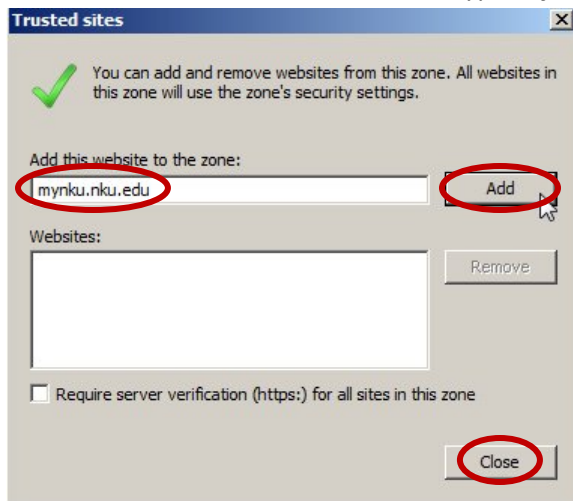
- Go to the myNKU login page at <http://myнку.nku.edu>.
- Click the **Tools** menu at the top of your browser window. (If you do not see this menu, press the Alt key on your keyboard to show the menu bar.)
- Make sure **Compatibility View** has a checkmark next to it. If it does not, click to activate it. If this option is grayed-out and you cannot click on it, just skip to the next step.



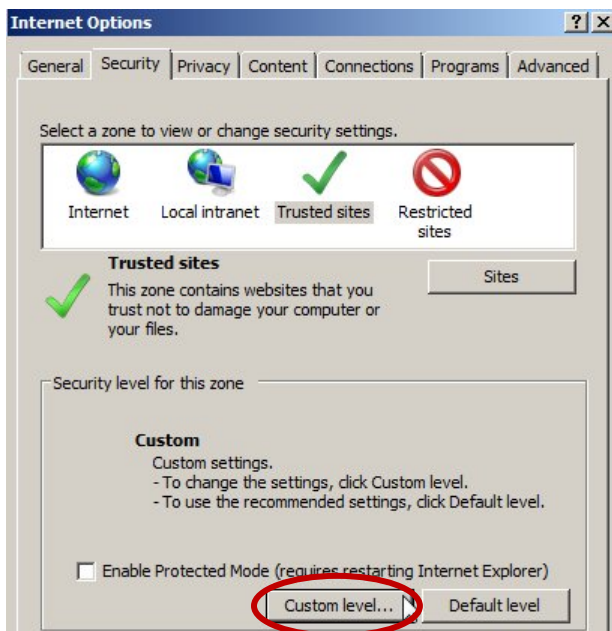
- Click the **Tools** menu again, and then click **Internet Options** at the bottom of the menu.
- Click the **Security** tab, then click the green checkmark labeled **Trusted Sites**, then click the **Sites** button.



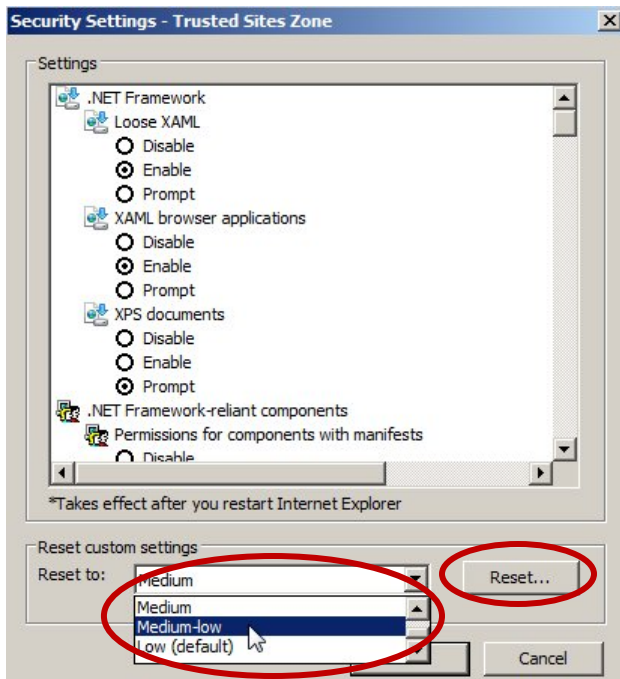
- Under “Add this website to the zone” type **myнку.nku.edu** in the box and click **Add**, then click **Close**.



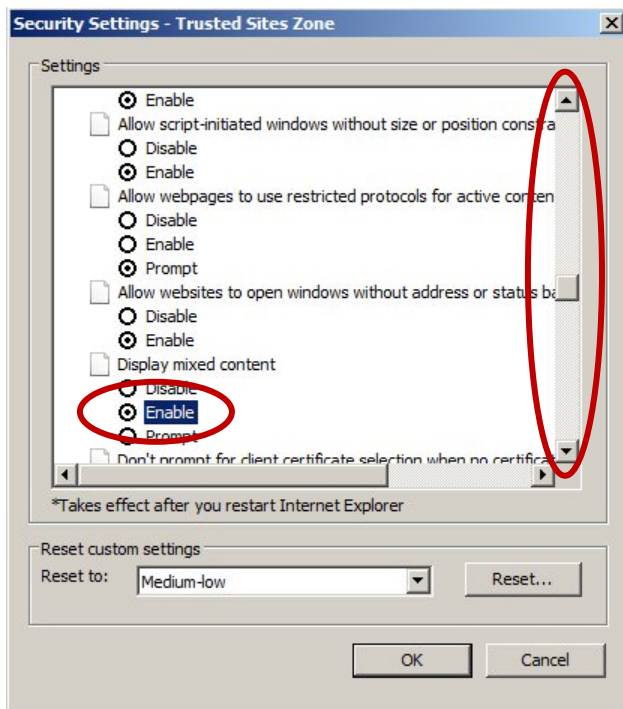
- Click the **Custom level...** button.



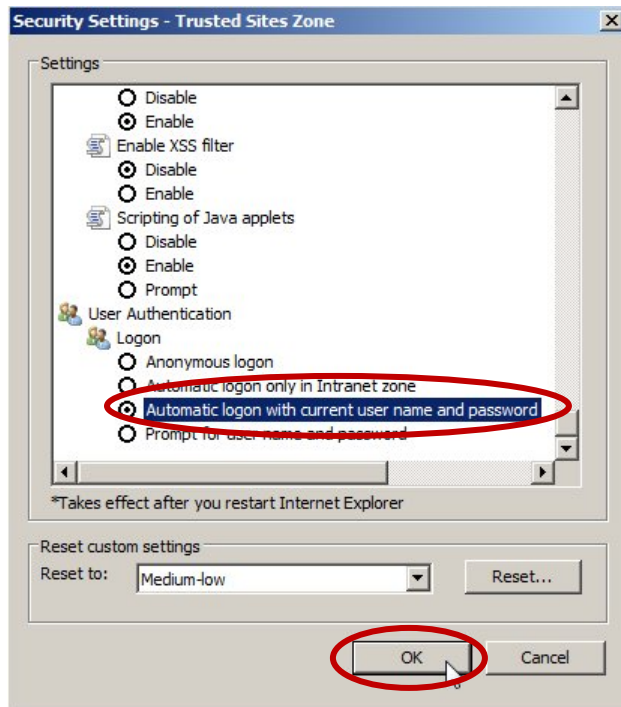
- Click on the drop-down menu under **Reset custom settings** and select **Medium-low**, and then click **Reset...**



- A warning will ask if you are sure you want to change the settings. Click **Yes**.
- In the Settings box, scroll about half way down to the setting for **Display mixed content**. Click on **Enable**.



- Scroll to the bottom of the Settings box and click **Automatic logon with current user name and password**. Click the **OK** button then click **OK** again to close the Internet Options window.



If you need additional assistance, please contact the IT Service Center at (859) 572-6911.